



Crime in Missouri 2001

Missouri State Highway Patrol
A division of the
Department of Public Safety

CRIME IN MISSOURI

2001

Principal Staff Researchers:

John Doyle, Research Analyst
Torino Johnson, Computer Information Technologist

**STATISTICAL ANALYSIS CENTER
1510 East Elm
Jefferson City, Missouri 65101
(573) 751-9000 ext. 299**

FOREWORD

This publication has been produced by the Missouri State Highway Patrol Statistical Analysis Center. It is intended to provide a basic understanding of Missouri's crime problems, their characteristics, and the law enforcement actions being taken to address these problems.

In 2001, the Uniform Crime Reporting Program, maintained by the Missouri State Highway Patrol, began operation. It is the Program's responsibility to collect, maintain, and insure the integrity of Missouri crime statistics. In addition, it also is responsible for reporting monthly crime statistics to the Federal Bureau of Investigation, Uniform Crime Reporting Section.

I encourage all criminal justice and other public officials to review this publication. If additional research or statistical information services about Missouri's crime or traffic safety problems are needed, please contact our agency's Statistical Analysis Center for assistance.

R. D. STOTTLEMYRE, Superintendent
Missouri State Highway Patrol

ACKNOWLEDGEMENTS

For the past several years, the Missouri State Highway Patrol, Uniform Crime Reporting (UCR) Program and Statistical Analysis Center have worked with a number of agencies to move Missouri from a voluntary to a mandatory crime reporting system as mandated by RSMo43.505. The Missouri Department of Public Safety led this initiative and their financial support to SAC and the UCR Program is appreciated. The direction and efforts of Joe Johnson and Laurie Crawford of the Missouri State Highway Patrol were instrumental to the success of the UCR Program.

Missouri law enforcement agencies who submitted crime and employment information to the UCR Program played a critical role in development of this report. Their participation in this Program is indicative of their desire to improve Missouri's law enforcement information capabilities.

Recognition also is given to the Federal Bureau of Investigation, Uniform Crime Reporting Section and the U.S. Department of Justice, Bureau of Justice Assistance for their guidance during implementation of the Missouri UCR Program. Over the past years, the U.S. Department of Justice, Bureau of Justice Statistics has supported, through grant funds, the Missouri SAC's efforts to provide publications like *Crime in Missouri* and other information services to the Missouri criminal justice community. Their financial support and technical assistance are appreciated.

Ronald G. Beck, Director
Missouri Statistical Analysis Center

CONTENTS

	PAGE
EXECUTIVE SUMMARY	xi
INTRODUCTION	1
1.0 MISSOURI CRIME CLOCK	3
2.0 MISSOURI CRIME INDEX COMPARISON ANALYSIS	7
3.0 MISSOURI ARREST ANALYSIS	17
4.0 MISSOURI DETAIL CRIME INDEX ANALYSIS	25
4.1 Murder	27
4.2 Forcible Rape	35
4.3 Robbery	41
4.4 Aggravated Assault	47
4.5 Burglary	53
4.6 Theft	59
4.7 Motor Vehicle Theft	65
4.8 Arson	71
5.0 MISSOURI DOMESTIC VIOLENCE ANALYSIS	77
5.1 Domestic Violence Related Incidents	79
5.2 Domestic Violence Related Homicides	85
6.0 MISSOURI LAW ENFORCEMENT AGENCY CRIME AND ARREST ANALYSIS	89
7.0 MISSOURI LAW ENFORCEMENT OFFICERS KILLED	137
8.0 MISSOURI LAW ENFORCEMENT OFFICERS ASSAULTED	141
9.0 MISSOURI LAW ENFORCEMENT EMPLOYMENT	153
10.0 MISSOURI LAW ENFORCEMENT AGENCY EMPLOYMENT / ASSAULT ANALYSIS	161
GLOSSARY	187

TABLES

PAGE

MISSOURI CRIME INDEX COMPARISON ANALYSIS

2.0.1	Crime Index Offenses, State of Missouri, 2001	9
2.0.2	Actual Reported Crime Index Offenses, State of Missouri, 1992 - 2001	10
2.0.3	Estimated Crime Index Offenses, State of Missouri, 1992 - 2001	11
2.0.4	Crime Index Offense Rates, State of Missouri, 1992 - 2001	12
2.0.5	Property Crime Index Economic Analysis (Property Stolen / Destroyed), 2001	13

MISSOURI ARREST ANALYSIS

3.0.1	Crime Index Clearance Rates, State of Missouri, 1992 - 2001	19
3.0.2	Crime Index Arrests, State of Missouri, 1992 - 2001	20
3.0.3	Crime Index Arrest Rates, State of Missouri, 1992 - 2001	21

MISSOURI DETAIL CRIME INDEX ANALYSIS

Murder

4.1.1	Murder Rates by Population Group, 2001	28
4.1.2	Murder Clearance Rates, 2000 - 2001	29
4.1.3	Murder Arrests by Sex and Age Group, 2001	29
4.1.4	Murder Arrests by Race and Age Group, 2001	29
4.1.5	Murder Victims by Sex and Age Group, 2001	30
4.1.6	Murder Victims by Race and Age Group, 2001	31
4.1.7	Type of Weapon Used by Offenders in Murders, 2001	32
4.1.8	Circumstances with Murders, 2001	33

Forcible Rape

4.2.1	Forcible Rape Rates by Population Group, 2001	36
4.2.2	Actual / Attempted Rape Offenses, 2001	37
4.2.3	Forcible Rape Clearance Rates, 2000 - 2001	37
4.2.4	Forcible Rape Arrests by Sex and Age Group, 2001	37
4.2.5	Forcible Rape Arrests by Race and Age Group, 2001	38

Robbery

4.3.1	Robbery Rates by Population Group, 2001	42
4.3.2	Type of Weapon Used in Robberies, 2001	43
4.3.3	Robbery Loss / Location, 2001	43
4.3.4	Robbery Clearance Rates, 2000 - 2001	44
4.3.5	Robbery Arrests by Sex and Age Group, 2001	44
4.3.6	Robbery Arrests by Race and Age Group, 2001	44

Aggravated Assault

4.4.1	Aggravated Assault Rates by Population Group, 2001	48
4.4.2	Type of Weapon Used in Aggravated Assaults, 2001	49
4.4.3	Aggravated Assault Clearance Rates, 2000 - 2001	49
4.4.4	Aggravated Assault Arrests by Sex and Age Group, 2001	50
4.4.5	Aggravated Assault Arrests by Race and Age Group, 2001	50

Burglary

4.5.1	Burglary Rates by Population Group, 2001	54
4.5.2	Type of Burglary, 2001	55
4.5.3	Burglary Loss / Location / Time, 2001	55
4.5.4	Burglary Clearance Rates, 2000 - 2001	56
4.5.5	Burglary Arrests by Sex and Age Group, 2001	56
4.5.6	Burglary Arrests by Race and Age Group, 2001	56

Theft

4.6.1	Theft Rates by Population Group, 2001	60
4.6.2	Theft by Value of Stolen Items, 2001	61
4.6.3	Nature of Theft, 2001	61
4.6.4	Theft Clearance Rates, 2000 - 2001	62
4.6.5	Theft Arrests by Sex and Age Group, 2001	62
4.6.6	Theft Arrests by Race and Age Group, 2001	62

Motor Vehicle Theft

4.7.1	Motor Vehicle Theft Rates by Population Group, 2001	66
4.7.2	Type of Vehicle Stolen, 2001	67
4.7.3	Motor Vehicle Theft Yearly Loss, 2000 - 2001	67
4.7.4	Motor Vehicle Theft Clearance Rates, 2000 - 2001	68
4.7.5	Motor Vehicle Theft Arrests by Sex and Age Group, 2001	68
4.7.6	Motor Vehicle Theft Arrests by Race and Age Group, 2001	68

Arson

4.8.1	Arson Rates by Population Group, 2001	72
4.8.2	Arson Loss by Type of Property, 2001	73
4.8.3	Arson Clearance Rates, 2000 - 2001	74
4.8.4	Arson Arrests by Sex and Age Group, 2001	74
4.8.5	Arson Arrests by Race and Age Group, 2001	74

MISSOURI DOMESTIC VIOLENCE ANALYSIS

5.1.1	Domestic Violence Incidents by Victim / Offender Relationship and Rates by County , 2001	81
5.2.1	Domestic Violence Related Homicides, Victim / Offender Relationship, 2001	87

MISSOURI LAW ENFORCEMENT AGENCY CRIME AND ARREST ANALYSIS

6.0.1	Index Offenses by Crime Type and Political Subdivision, 2001	91
6.0.2	Persons Arrested by Political Subdivision, 2001	115

MISSOURI LAW ENFORCEMENT OFFICERS KILLED

7.0.1	Law Enforcement Officers Killed in the Line of Duty, State of Missouri, 1992 - 2001	140
-------	---	-----

MISSOURI LAW ENFORCEMENT OFFICERS ASSAULTED

8.0.1	Law Enforcement Officer Assaults and Assault Rates, State of Missouri, 1997 - 2001	147
8.0.2	Law Enforcement Officer Assaults by Type of Weapon, State of Missouri, 1997 - 2001	148
8.0.3	Law Enforcement Officer Assaults by Population Group, State of Missouri, 2001	149
8.0.4	Law Enforcement Officer Assaults, Occurrence of Injury by Type of Weapon, State of Missouri, 2001	149
8.0.5	Law Enforcement Officer Assaults, Type of Assignment by Type of Circumstance, State of Missouri, 2001	150

MISSOURI LAW ENFORCEMENT EMPLOYMENT

9.0.1	Law Enforcement Sworn Employees by Population Group, State of Missouri, 1997 - 2001	157
9.0.2	Law Enforcement Civilian Employees by Population Group, State of Missouri, 1997 - 2001	158
9.0.3	Law Enforcement Sworn and Civilian Employees by Population Group, State of Missouri, 1997 - 2001	159
9.0.4	Law Enforcement Sworn and Civilian Employees by Sex and Population Group, State of Missouri, 2001	160

MISSOURI LAW ENFORCEMENT AGENCY EMPLOYMENT / ASSAULT ANALYSIS

10.0.1	Law Enforcement Employment and Assaults by Reporting Agency, 2001	165
--------	---	-----

FIGURES

PAGE

MISSOURI CRIME CLOCK

1.0.1	Missouri Crime Clock, 2001	5
-------	----------------------------------	---

MISSOURI CRIME INDEX COMPARISON ANALYSIS

2.0.1	Crime Index Offense Rates, State of Missouri, Time Series	14
2.0.2	Crime Index Offense Rates, State of Missouri by County, 2001	14
2.0.3	Violent Index Offense Rates, State of Missouri, Time Series	15
2.0.4	Violent Index Offense Rates, State of Missouri by County, 2001	15
2.0.5	Property Index Offense Rates, State of Missouri, Time Series	16
2.0.6	Property Index Offense Rates, State of Missouri by County, 2001	16

MISSOURI ARREST ANALYSIS

3.0.1	Crime Index Arrest Rates, State of Missouri, Time Series	22
3.0.2	Violent Index Arrest Rates, State of Missouri, Time Series	23
3.0.3	Property Index Arrest Rates, State of Missouri, Time Series	24

MISSOURI DETAIL CRIME INDEX ANALYSIS

Murder

4.1.1	Murder Offense Rates, State of Missouri, Time Series	34
-------	--	----

Forcible Rape

4.2.1	Rape Offense Rates, State of Missouri, Time Series	39
-------	--	----

Robbery

4.3.1	Robbery Offense Rates, State of Missouri, Time Series	45
-------	---	----

Aggravated Assault

4.4.1	Aggravated Assault Offense Rates, State of Missouri, Time Series	51
-------	--	----

Burglary

4.5.1	Burglary Offense Rates, State of Missouri, Time Series	57
-------	--	----

Theft

4.6.1	Theft Offense Rates, State of Missouri, Time Series	63
-------	---	----

Motor Vehicle Theft

4.7.1	Motor Vehicle Theft Offense Rates, State of Missouri, Time Series	69
-------	---	----

Arson

4.8.1 Arson Offense Rates, State of Missouri, Time Series 75

MISSOURI LAW ENFORCEMENT OFFICERS KILLED

7.0.1 Law Enforcement Officers Killed in the Line of Duty, State of Missouri,
1992 - 2001 140

MISSOURI LAW ENFORCEMENT OFFICERS ASSAULTED

8.0.1 Missouri Law Enforcement Assault Clock, 2001 145
8.0.2 Law Enforcement Officer Assault Rates, State of Missouri, 1997 - 2001 148
8.0.3 Law Enforcement Officer Assaults by Type of Activity, State of Missouri,
2001 151
8.0.4 Law Enforcement Officer Assaults by Type of Assignment, State of Missouri,
2001 151
8.0.5 Law Enforcement Officer Assaults, Twenty-Four Hour Analysis, State of
Missouri, 2001 152

EXECUTIVE SUMMARY

This Digest is produced annually by the Missouri State Highway Patrol (MSHP), Statistical Analysis Center (SAC). In the past, the primary source of data has been from law enforcement agencies who voluntarily submitted crime statistics to the Federal Bureau of Investigation's (FBI) Uniform Crime Reporting Program (UCR). Since only a small percentage of agencies submitted data directly to the FBI's UCR Program, the SAC relied on statistical estimates to measure the extent of crime in Missouri. Beginning in 2001, Missouri's Uniform Crime Reporting Program (UCR) began operation. Statutorily, Missouri law enforcement agencies are required to submit their crime statistics to Missouri's UCR Program. Using these data, the SAC no longer has to rely on statistical estimates. When comparing crime statistics for 2001 and prior years, users need to keep in mind two different statistical methods were employed to derived Missouri's crime totals.

In addition to crime index offense and arrest data, this publication contains data on domestic violence incidents, officers killed or assaulted in the line of duty, and law enforcement employment levels in the State of Missouri.

The Crime Index is the sum of eight major offenses and is used to measure the magnitude of crime in the United States. The major offenses are included in the Index because of their frequency of occurrence and the fact that they are most likely to be reported to law enforcement agencies. These eight offenses are: murder, forcible rape, robbery, aggravated assault, burglary, theft, motor vehicle theft, and arson. The first four make up the Violent Crime Index and the last four make up the Property Crime Index.

In 2001, 274,605 Crime Index offenses were reported in the State of Missouri. In 2001, one Index Crime was committed every 1.9 minutes. In 29.3 of every 100 Crime Index offenses, the cases were cleared by arrest or exceptional means.

Violent offenses made up 11.4 percent of the total 2001 Missouri Crime Index. There were 31,271 Violent Index offenses reported in 2001. A violent offense was committed in Missouri every 17.0 minutes. In 49.8 of every 100 Violent Index offenses, the cases were cleared by arrest or exceptional means. A brief analysis of each type of Violent Index offense is given below.

- There were 399 murders reported in 2001. While murder is the most serious Index offense, it made up only 0.1 percent of the total 2001 Missouri Crime Index. One murder was committed in the State every 22.6 hours. In 68.2 of every 100 murders, the cases were cleared by arrest or exceptional means.
- There were 1,396 forcible rapes reported in 2001. Forcible rape accounted for 0.5 percent of the total 2001 Missouri Crime Index. One forcible rape was committed every 6.4 hours. In 45.8 of every 100 forcible rapes, the cases were cleared by arrest or exceptional means.
- There were 7,802 robberies reported in 2001. Robbery accounted for 2.8 percent of the total 2001 Missouri Crime Index. One robbery occurred every 1.1 hours. In 24.5 of every 100 robberies, the cases were cleared by arrest or exceptional means.
- There were 21,674 aggravated assaults reported in 2001. Aggravated assault accounted for 7.9 percent of the total 2001 Missouri Crime Index. One aggravated assault occurred every 24.6 minutes. In 58.8 of every 100 aggravated assaults, the cases were cleared by arrest or exceptional means.

Property offenses made up 88.6 percent of the total 2001 Missouri Crime Index. There were 243,334 Property Index offenses reported in 2001. Property offenses accounted for \$349,612,061 in property stolen or destroyed. One such offense occurred every 2.2 minutes in the State. In 17.5 of every 100 Property Index offenses, the cases were cleared by arrest or exceptional means. A brief analysis of each type of Property Index offense is given below.

- There were 43,367 burglaries reported in 2001. Burglary accounted for 15.8 percent of the total 2001 Missouri Crime Index. One burglary occurred every 12.2 minutes and \$62,128,652 in property / cash was stolen in 2001 due to this offense. In 14.5 of every 100 burglaries, the cases were cleared by arrest or exceptional means.

- There were 169,086 thefts reported in 2001. Theft accounted for 61.6 percent of the total 2001 Missouri Crime Index. One theft occurred every 3.1 minutes and \$97,021,570 in property / cash was stolen in 2001 due to this offense. In 18.3 of every 100 thefts, the cases were cleared by arrest or exceptional means.
- There were 28,329 motor vehicle thefts reported in 2001. Motor vehicle theft accounted for 10.3 percent of the total 2001 Missouri Crime Index. One motor vehicle theft occurred every 18.7 minutes and \$170,832,615 in property was stolen in 2001 due to this offense. In 15.9 of every 100 motor vehicle thefts, the cases were cleared by arrest or exceptional means.
- There were 2,552 arsons reported in 2001. Arson accounted for 0.9 percent of the total 2001 Missouri Crime Index. One arson occurred every 3.1 hours and \$19,629,224 in property was destroyed due to arson in 2001. In 21.7 of every 100 arsons, the cases were cleared by arrest or exceptional means.

In 2001, law enforcement agencies in Missouri reported 29,925 incidents of domestic violence. These included:

- 9,227 incidents of spousal abuse.
- 7,705 incidents between individuals living together.
- 4,638 incidents between blood relatives.
- 2,900 incidents between individuals who have lived together in the past.

In 2001, four officers were killed feloniously and four were killed accidentally in the line of duty in the State of Missouri.

INTRODUCTION

This Digest is one in a series of publications prepared by the Missouri State Highway Patrol, Statistical Analysis Center (SAC). It is designed to present data on crime and arrest activity in Missouri from 1992 through 2001 with special emphasis on the most recent year's crime and arrest activity (2001).

The crime and arrest data in this publication are segmented into ten parts. The first section displays the Missouri Crime Clock. This clock offers an overview of the frequency of occurrence of Crime Index offenses committed in the State in relation to time. The Crime Index is the sum of the eight major offenses used to indicate the occurrence of crime in the United States. The eight offenses making up the total Crime Index are: murder, forcible rape, robbery, aggravated assault, burglary, theft, motor vehicle theft, and arson. The second section provides data related to Crime Index offenses committed in the State of Missouri. Its purpose is to provide a comparison of the various types of Crime Index offenses so their relative importance can be assessed. In addition, Crime Index activity is displayed by geographical regions of the State and also over time to observe trends. The third section presents data on arrest activity and clearance rates associated with Crime Index offenses as well as arrest activity associated with other classes of criminal offenses. These data provide an appreciation of criminal enforcement activity being performed in the State by class of crime. The fourth section provides a series of data and analysis related to each of the eight types of Crime Index offenses. Data are provided on crime activity, clearance rates, crime patterns, and arrest activity associated with each of these offenses. The fifth section provides summary data on Crime Index offenses and arrest activity for specific political subdivisions in the State. Section six provides summary data on domestic violence incidents committed in Missouri and identifies relationships between domestic violence victims and offenders. Sections seven and eight provide summary data on law enforcement officers killed and assaulted while on duty. Section nine provides uniform and civilian employment information for Missouri law enforcement agencies. Section ten provides data on law enforcement employees as well as the number of assaults on sworn personnel for specific political subdivisions in the State.

Prior to 2001, data in this Digest were provided on a voluntary basis by Missouri law enforcement agencies to the Federal Bureau of Investigation's (FBI), Uniform Crime Reporting (UCR) Program. In 2001, state statute RSMo43.505 was enacted requiring Missouri law enforcement agencies to report their UCR crime statistics to the Missouri UCR Program administered by the Missouri State Highway Patrol.

Increases in crime activity may reflect the transition from a voluntary to mandatory UCR Program. Care is warranted when directly comparing crime statistics between 2001 and previous years for this reason.

The national UCR Program was initiated in 1930 by the Committee on Uniform Crime Reports of the International Association of Chiefs of Police (IACP). This committee developed uniform offense and arrest classifications as well as reporting procedures which could be used by law enforcement agencies throughout the nation. The FBI was designated to administer the Program and became the national clearinghouse for UCR data. The Committee on Uniform Crime Reports of the IACP continues to serve the national Program in an advisory capacity. In 1966, the National Sheriff's Association also established a Committee on Uniform Crime Reports to act as an advisory body for this program and to promote reporting to the UCR Program.

Crime and arrest data are, for the most part, collected on a monthly basis by several methods in Missouri. The Missouri UCR Program provides report forms, tally sheets, and self-addressed envelopes to Missouri law enforcement agencies who complete and return them to the Program. Missouri city and county law enforcement agencies also have the option of reporting their crime activity on a Web-based UCR reporting application where State law enforcement agencies utilize an electronic spreadsheet to report their monthly crime activity. Data from all Missouri law enforcement agencies are moved to a central data repository maintained by the MSHP.

Not all Missouri law enforcement report twelve months of summary crime data. To reduce the problems associated with both non-reporting and incomplete reporting, a number of techniques have been used for displaying statewide crime and arrest activity. For statewide arrest activity, reliance has been placed on displaying arrest rates on a per 100,000 population basis. This type of data display identifies arrest activity in relation to the population of only those jurisdictions reporting the activity. For statewide crime activity, mathematical routines have been employed to estimate the actual number of crimes in the State. The similarity between 2001 crime estimates and actual reported crime is reflective of the high compliance rate of law enforcement agencies in Missouri to RSMo43.505, requiring law enforcement agencies to

report their crime statistics to the UCR Program. Crime rates on a per 100,000 population basis also are included. These rates are based on estimates of actual crimes being committed rather than on those reported. Individual data displays in the Digest fully identify whether reported, estimated, or rates per 100,000 population data are used in the display.

Data displays identifying specific political subdivision crime and arrest activity contain only the activity reported to the UCR Program. No effort has been made to estimate individual law enforcement agency's crime and arrest activity. It is important to note that statistics for a political subdivision include not only crime and arrest activity reported by a local law enforcement agency, but also crime and arrest activity reported by state agencies (e.g., MSHP, Department of Conservation, Water Patrol).

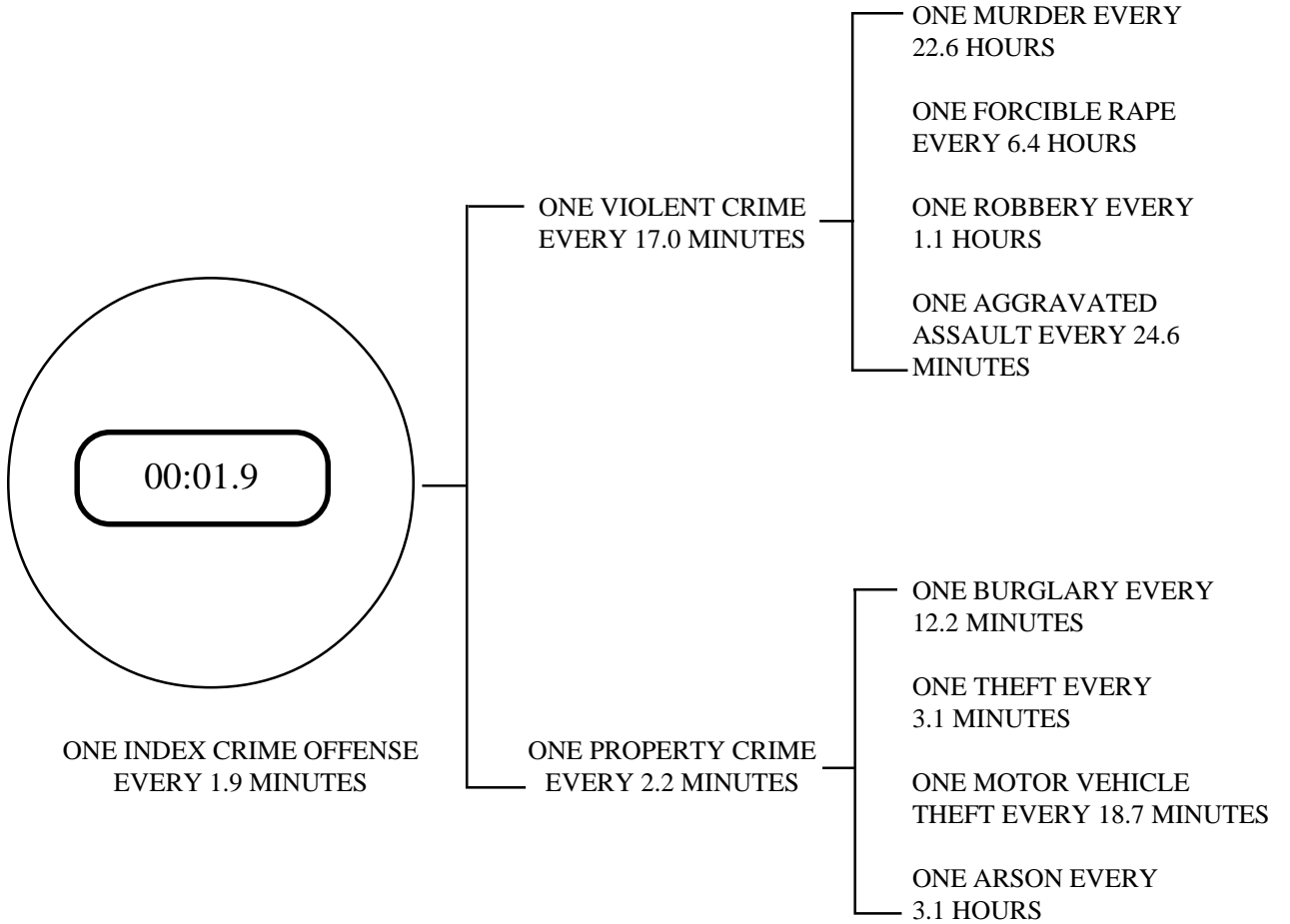
Slight discrepancies may be found if comparisons are made with FBI UCR publications and this Digest covering the same subject matter for the State of Missouri. Although similar, estimation routines and rates per 100,000 population calculations used by the FBI are not the same as those used in this Digest. Discrepancies also may be noted when examining actual reported figures. This is a result of updates having been made to UCR files between the time the FBI data were processed and the time the SAC analysis was performed. This report is merely a snap shot of crime summary data reported to the Missouri UCR Program. Law enforcement agencies continually update their UCR data for a variety of reasons. For this reason, statistics in this report may be different than statistics obtained from other sources or reports.

1.0 MISSOURI CRIME CLOCK

THE CRIME CLOCK SUMMARIZES ESTIMATED CRIMINAL ACTIVITY IN THE STATE OF MISSOURI DURING 2001 IN RELATION TO TIME. FROM THIS PERSPECTIVE, AN APPRECIATION OF THE RELATIVE FREQUENCY OF VARIOUS CRIMINAL OFFENSES CAN BE OBTAINED. THE CRIME CLOCK SHOULD BE VIEWED WITH CARE. IT IS DESIGNED TO CONVEY ANNUAL ESTIMATED CRIME EXPERIENCE BY SHOWING THE RELATIVE FREQUENCY OF OCCURRENCE OF THE INDEX OFFENSES. THIS MODE OF DISPLAY SHOULD NOT BE TAKEN TO IMPLY A REGULARITY IN THE COMMISSION OF CRIME; RATHER, IT REPRESENTS THE ANNUAL RATIO OF CRIME TO FIXED TIME INTERVALS.

MISSOURI CRIME CLOCK

2001



2.0 MISSOURI CRIME INDEX COMPARISON ANALYSIS

A SERIES OF TABLES AND FIGURES SUMMARIZES CRIME INDEX OFFENSES COMMITTED IN THE STATE OF MISSOURI. THE PURPOSE OF THESE DISPLAYS IS TO COMPARE THE VARIOUS TYPES OF CRIME INDEX OFFENSES BEING COMMITTED ACCORDING TO THEIR RELATIVE CONTRIBUTION TO THE CRIME INDEX. IN ADDITION, CRIME INDEX OFFENSE RATES ARE DISPLAYED BY GEOGRAPHICAL REGIONS OF THE STATE AND OVER TIME IN ORDER TO OBSERVE TRENDS.

CRIME INDEX OFFENSES^{1,2}
STATE OF MISSOURI
2001

OFFENSE	REPORTED	ESTIMATED ¹	% OF ESTIMATED TOTAL CRIME INDEX	% OF ESTIMATED VIOLENT CRIME INDEX	% OF ESTIMATED PROPERTY CRIME INDEX	RATE PER ² 100,000 POPULATION
TOTAL INDEX	274,605	274,996	100.0	--	--	4,953.8
VIOLENT INDEX	31,271	31,352	11.4	100.0	--	564.7
PROPERTY INDEX	243,334	243,644	88.6	--	100.0	4,389.1
MURDER	399	399	0.1	1.3	--	7.2
FORCIBLE RAPE	1,396	1,400	0.5	4.5	--	25.2
ROBBERY	7,802	7,818	2.8	24.9	--	140.8
AGGRAVATED ASSAULT	21,674	21,735	7.9	69.3	--	391.5
BURGLARY	43,367	43,444	15.8	--	17.8	782.6
THEFT	169,086	169,292	61.6	--	69.5	3,049.7
MOTOR VEHICLE THEFT	28,329	28,357	10.3	--	11.6	510.8
ARSON	2,552	2,552	0.9	--	1.0	46.0

¹ Beginning in 2002, RSMo 43.505 required all law enforcement agencies in Missouri to report their crime statistics to the Missouri State Highway Patrol - Uniform Crime Reporting Section. Due to the high compliance rate, 2001 estimates will closely resemble 2001 actual crime totals.

² Crime Index Offense rates are based on estimated crime index offenses in the State of Missouri. They are computed on a per 100,000 population basis. See Glossary for explanation of the computations used to obtain these rates.

See Glossary for explanation of the computations used to obtain estimates of Missouri's Crime Index offenses.

TABLE 2.0.1

ACTUAL REPORTED CRIME INDEX OFFENSES^{1,2}
STATE OF MISSOURI
1992 - 2001

OFFENSE	1992	1993	1994	1995	1996	1997	1998	1999	2000	2001
TOTAL INDEX	252,283	254,135	266,092	258,094	254,950	245,909	247,428	236,360	236,365	274,605
VIOLENT INDEX	36,918	37,191	37,191	33,463	29,664	28,962	28,054	25,637	25,438	31,271
PROPERTY INDEX	215,365	216,944	228,901	224,631	225,286	216,947	219,374	210,723	210,927	243,334
MURDER	523	552	531	433	391	387	372	329	332	399
FORCIBLE RAPE	1,767	1,757	1,780	1,555	1,422	1,405	1,343	1,291	1,202	1,396
ROBBERY	11,629	12,472	12,020	10,689	8,980	8,277	7,978	7,025	7,436	7,802
AGGRAVATED ASSAULT	22,999	22,410	22,860	20,786	18,871	18,893	18,361	16,992	16,468	21,674
BURGLARY	53,189	49,690	51,336	45,352	42,675	42,781	43,072	38,373	37,371	43,367
THEFT	134,824	137,331	149,331	152,963	157,576	146,470	150,871	148,226	147,718	169,086
MOTOR VEHICLE THEFT	25,039	27,766	26,025	24,165	22,889	25,545	23,415	22,117	23,696	28,329
ARSON	2,313	2,157	2,209	2,151	2,146	2,151	2,016	2,007	2,142	2,552
NUMBER OF REPORTING AGENCIES ¹	251	247	246	246	250	246	243	246	244	564

¹ Beginning in 2002, RSMo43.505 required all law enforcement agencies in Missouri to report their crime statistics to the Missouri State Highway Patrol - Uniform Crime Reporting Section. Due to the high compliance rate, 2001 estimates will closely resemble 2001 actual crime totals.

² Number of law enforcement agencies reporting crime index offense activity to the UCR Program in a given year.

TABLE 2.0.2

**ESTIMATED CRIME INDEX OFFENSES¹
STATE OF MISSOURI
1992 - 2001**

OFFENSE	1992	1993	1994	1995	1996	1997	1998	1999	2000	2001
TOTAL INDEX	267,076	270,778	283,699	274,665	273,510	262,505	264,248	252,792	255,908	274,996
VIOLENT INDEX	38,242	39,087	39,175	35,375	31,820	30,737	30,018	27,383	27,402	31,352
PROPERTY INDEX	228,834	231,691	244,524	239,290	241,690	231,768	234,230	225,409	228,506	243,644
MURDER	544	587	561	472	432	424	401	357	350	399
FORCIBLE RAPE	1,861	1,906	1,959	1,665	1,579	1,513	1,469	1,432	1,349	1,400
ROBBERY	11,802	12,694	12,172	10,854	9,200	8,416	8,119	7,154	7,592	7,818
AGGRAVATED ASSAULT	24,035	23,900	24,483	22,384	20,609	20,384	20,029	18,440	18,111	21,735
BURGLARY	57,223	53,950	55,860	49,802	47,191	47,001	47,261	42,444	41,781	43,444
THEFT	143,270	146,634	159,177	161,889	168,296	155,969	160,298	157,791	159,669	169,292
MOTOR VEHICLE THEFT	25,878	28,827	27,132	25,226	23,900	26,527	24,536	23,045	24,779	28,357
ARSON	2,463	2,280	2,355	2,373	2,303	2,271	2,135	2,129	2,277	2,552

¹ Beginning in 2002, RSMo 43.505 required all law enforcement agencies in Missouri to report their crime statistics to the Missouri State Highway Patrol - Uniform Crime Reporting Section. Due to the high compliance rate, 2001 estimates will closely resemble 2001 actual crime totals.

See Glossary for explanation of the computations used to obtain estimates of Missouri's Crime Index offenses.

TABLE 2.0.3

CRIME INDEX OFFENSE RATES^{1,2}
STATE OF MISSOURI
1992 - 2001

OFFENSE	1992	1993	1994	1995	1996	1997	1998	1999	2000	2001
TOTAL INDEX	5,139.4	5,173.5	5,370.4	5,159.0	5,102.6	4,859.4	4,858.4	4,623.1	4,573.7	4,953.8
VIOLENT INDEX	735.9	746.8	741.6	664.4	593.6	569.0	551.9	500.8	489.7	564.7
PROPERTY INDEX	4,403.5	4,426.7	4,628.8	4,494.5	4,509.0	4,290.4	4,306.5	4,122.3	4,083.9	4,389.1
MURDER	10.5	11.2	10.6	8.9	8.0	7.8	7.4	6.5	6.3	7.2
FORCIBLE RAPE	35.8	36.4	37.1	31.3	29.5	28.0	27.0	26.2	24.1	25.2
ROBBERY	227.1	242.5	230.4	203.9	171.6	155.8	149.3	130.8	135.7	140.8
AGGRAVATED ASSAULT	462.5	456.6	463.5	420.4	384.5	377.3	368.3	337.2	323.7	391.5
BURGLARY	1,101.1	1,030.8	1,057.4	935.4	880.4	870.1	868.9	776.2	746.7	782.6
THEFT	2,757.0	2,801.6	3,013.2	3,040.7	3,139.8	2,887.3	2,947.2	2,885.7	2,853.7	3,049.7
MOTOR VEHICLE THEFT	498.0	550.8	513.6	473.8	445.9	491.0	451.1	421.5	442.8	510.8
ARSON	47.4	43.6	44.6	44.6	43.0	42.0	39.3	38.9	40.7	46.0

¹ Prior to 2001, Missouri law enforcement agencies voluntarily reported crime index offense data. To account for non-reporting agencies, Crime Index Offense Rates for these years were based on mathematical estimates. In 2001, RSMo43.505 mandated all Missouri law enforcement agencies to report crime index offense data to the Missouri Uniform Crime Reporting Program managed by the Missouri State Highway Patrol. For this reason, 2001 Crime Index Offense Rates were based on data reported by nearly 100% of Missouri law enforcement agencies. Users should keep in mind that transition from a voluntary to a mandatory crime reporting system may affect comparisons of 2001 Crime Index Offense rates to prior years.

² Crime Index Offense Rates are computed on a per 100,000 population basis.

See Glossary for explanation of the computations used to obtain these rates.

TABLE 2.0.4

PROPERTY CRIME INDEX
ECONOMIC ANALYSIS
(PROPERTY STOLEN / DESTROYED)

2001

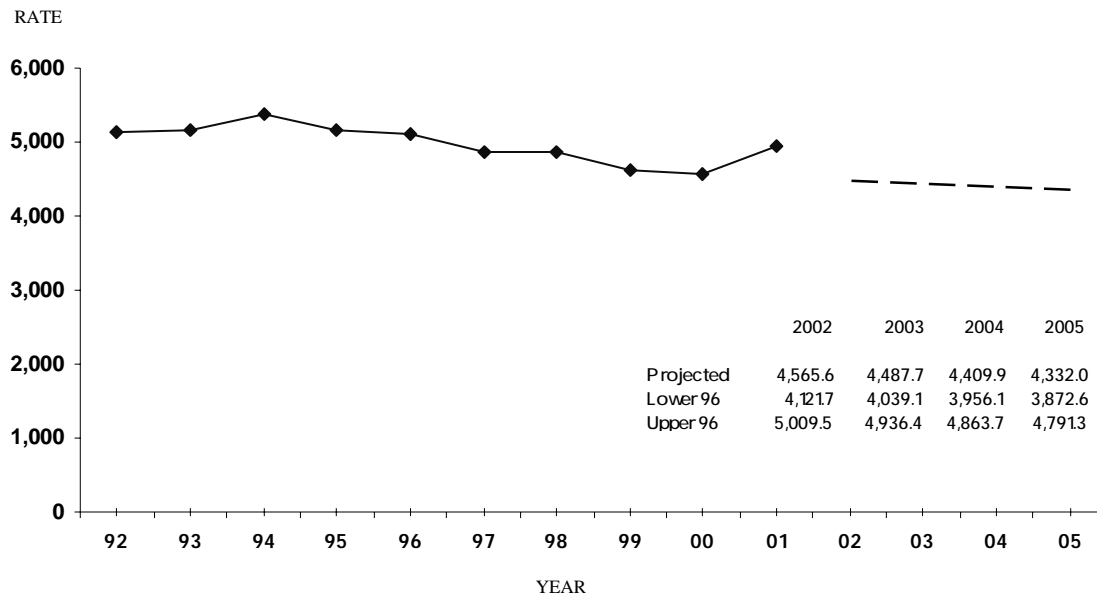
TYPE	LOSS PER¹ OFFENSE	TOTAL² LOSS
BURGLARY	\$1,426.24	\$62,128,652
THEFT	572.17	97,021,570
MOTOR VEHICLE THEFT	6,017.02	170,832,615
ARSON	7,655.49	19,629,224
TOTAL	-----	\$349,612,061

¹ Dollar loss per offense is calculated using only those property offenses for which law enforcement agencies reported an actual dollar amount for the property stolen or destroyed.

² Total loss is calculated by multiplying the dollar loss per offense by the number of such offenses in 2001.

TABLE 2.0.5

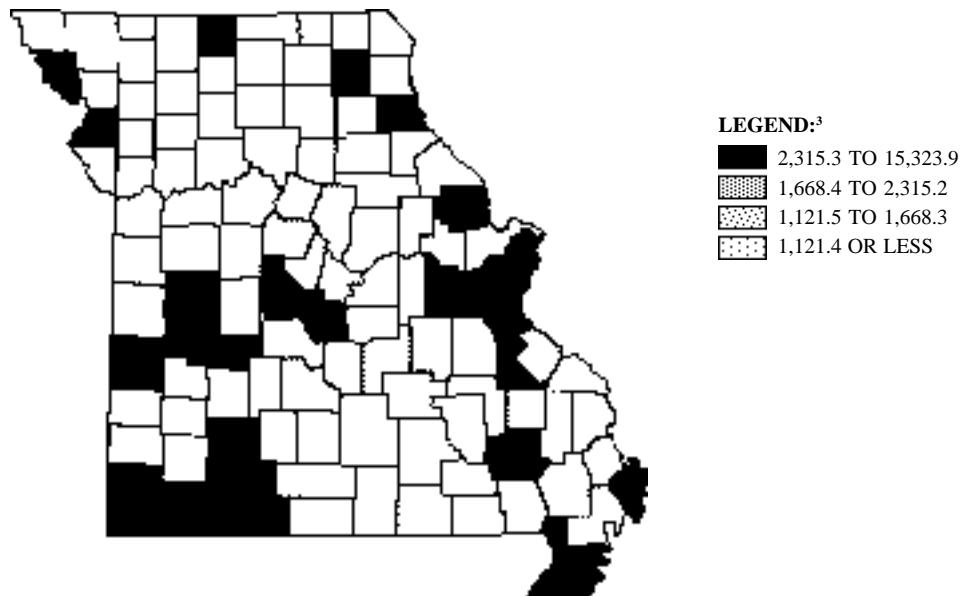
CRIME INDEX OFFENSE RATES, STATE OF MISSOURI¹
TIME SERIES



¹Crime Index offense rates are based on estimated crime index offenses in the State of Missouri. They are computed on a per 100,000 population basis. See Glossary for explanation of the computations used to obtain these rates.

FIGURE 2.0.1

CRIME INDEX OFFENSE RATES,¹
STATE OF MISSOURI
BY COUNTY / 2001³



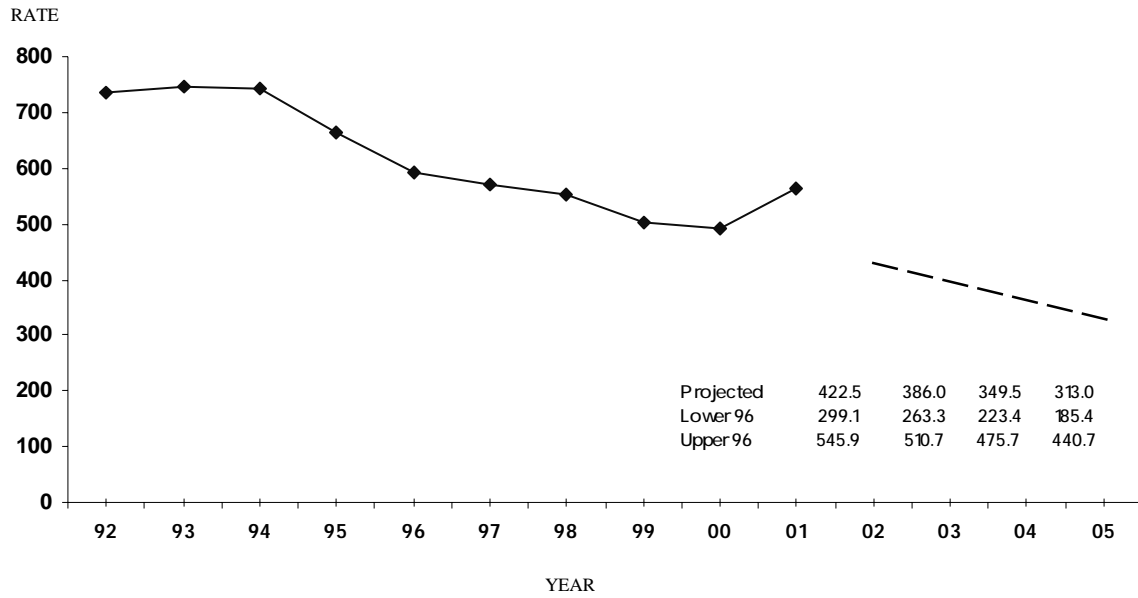
¹ Crime Index offense rates are based on estimated crime index offenses in the State of Missouri. They are computed on a per 100,000 population basis. See Glossary for explanation of the computations used to obtain these rates.

² Because the jurisdictional boundaries of reporting agencies do not coincide with county boundaries in some instances, the following counties were combined: (Clay/Platte/Jackson) and (Scott/New Madrid).

³ Legend categories are based on quartiles of counties.

FIGURE 2.0.2

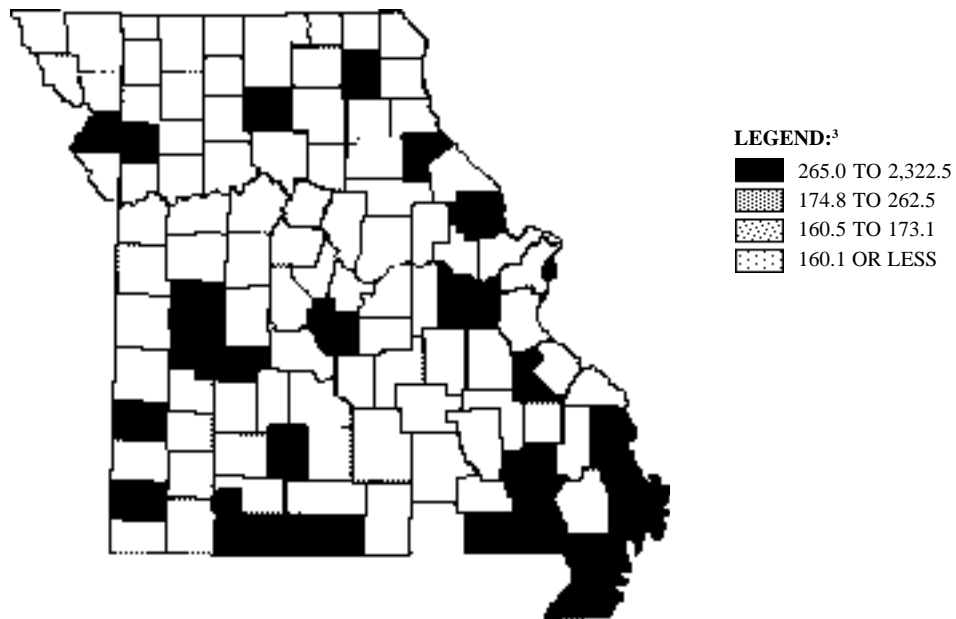
VIOLENT INDEX OFFENSE RATES, STATE OF MISSOURI¹
TIME SERIES



¹ Violent Index offense rates are based on estimated violent index offenses in the State of Missouri. They are computed on a per 100,000 population basis. See Glossary for explanation of the computations used to obtain these rates.

FIGURE 2.0.3

VIOLENT INDEX OFFENSE RATES,¹
STATE OF MISSOURI
BY COUNTY / 2001³



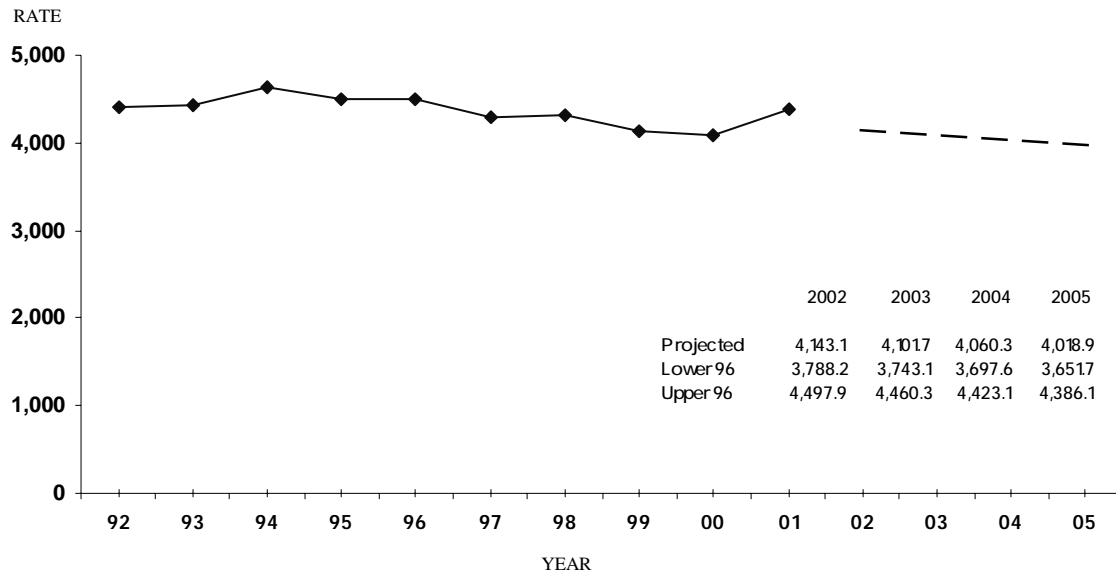
¹ Violent Index offense rates are based on estimated violent index offenses in the State of Missouri. They are computed on a per 100,000 population basis. See Glossary for explanation of the computations used to obtain these rates.

² Because the jurisdictional boundaries of reporting agencies do not coincide with county boundaries in some instances, the following counties were combined: (Clay/Platte/Jackson) and (Scott/New Madrid).

³ Legend categories are based on quartiles of counties.

FIGURE 2.0.4

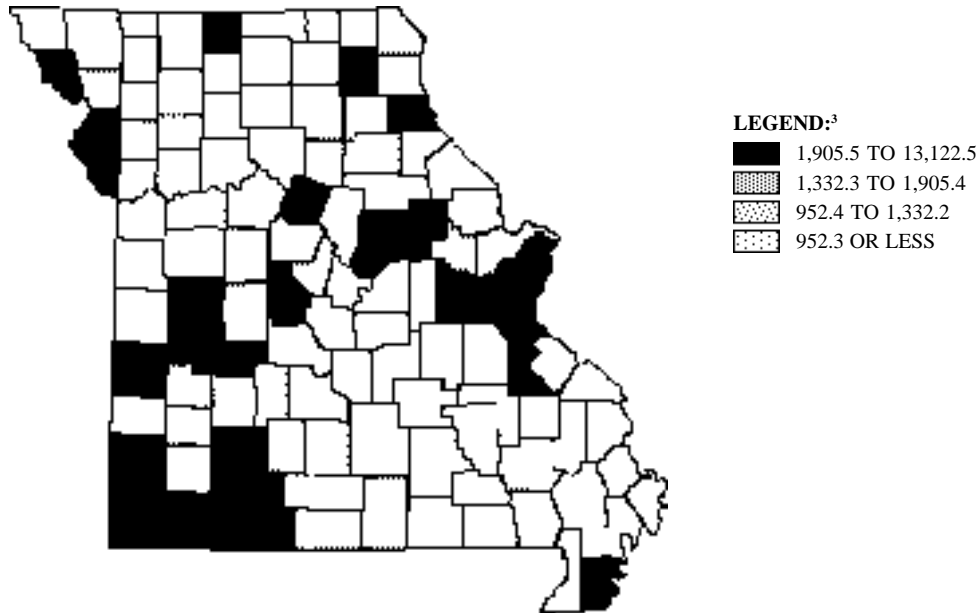
PROPERTY INDEX OFFENSE RATES, STATE OF MISSOURI¹
TIME SERIES



¹ Property Index offense rates are based on estimated property index offenses in the State of Missouri. They are computed on a per 100,000 population basis. See Glossary for explanation of the computations used to obtain these rates.

FIGURE 2.0.5

PROPERTY INDEX OFFENSE RATES,¹
STATE OF MISSOURI
BY COUNTY / 2001³



¹ Property Index offense rates are based on estimated property index offenses in the State of Missouri. They are computed on a per 100,000 population basis. See Glossary for explanation of the computations used to obtain these rates.

² Because the jurisdictional boundaries of reporting agencies do not coincide with county boundaries in some instances, the following counties were combined: (Clay/Platte/Jackson) and (Scott/New Madrid).

³Legend categories are based on quartiles of counties.

FIGURE 2.0.6

3.0 MISSOURI ARREST ANALYSIS

A SERIES OF TABLES AND FIGURES SUMMARIZES MISSOURI CRIME INDEX ARREST CLEARANCE RATES, ACTUAL ARREST ACTIVITY ASSOCIATED WITH CRIME INDEX OFFENSES, AND ARREST ACTIVITY ASSOCIATED WITH ALL OTHER CLASSES OF CRIMINAL ACTIVITY REPORTED TO THE UCR SYSTEM. THE PURPOSE OF THESE DISPLAYS IS TO PROVIDE AN OVERVIEW OF CRIMINAL ENFORCEMENT ACTIVITY BEING PERFORMED IN THE STATE OF MISSOURI BY CLASS OF CRIME. IN ADDITION, ARREST RATES ARE DISPLAYED OVER TIME IN ORDER TO OBSERVE TRENDS.

CRIME INDEX CLEARANCE RATES^{1,2}
STATE OF MISSOURI
1992 - 2001

OFFENSE	1992	1993	1994	1995	1996	1997	1998	1999	2000	2001
TOTAL INDEX	23.9	22.0	22.9	22.8	23.1	23.0	21.8	21.6	20.5	29.3
VIOLENT INDEX	45.6	41.8	44.5	46.1	47.9	47.7	49.1	48.9	45.8	49.8
PROPERTY INDEX	20.2	18.6	19.3	19.3	19.8	19.7	18.3	18.3	17.4	17.5
MURDER	73.8	70.6	83.5	86.0	76.2	66.6	71.1	60.3	62.7	68.2
FORCIBLE RAPE	55.9	56.7	58.5	57.8	61.1	58.6	60.2	58.3	53.4	45.8
ROBBERY	25.2	23.2	24.3	24.9	27.6	26.1	26.6	26.3	24.9	24.5
AGGRAVATED ASSAULT	54.5	50.4	53.3	55.4	56.0	56.1	57.9	57.3	54.5	58.8
BURGLARY	16.4	13.3	14.9	14.8	15.7	14.1	13.8	14.2	14.5	15.2
THEFT	22.3	21.2	21.2	20.9	21.1	21.9	19.7	19.5	18.3	18.3
MOTOR VEHICLE THEFT	16.2	14.8	17.1	17.9	18.3	16.5	17.3	17.5	15.9	16.2
ARSON	24.7	18.7	21.9	18.5	19.3	20.1	23.3	16.4	21.7	16.8

¹ Clearance rates indicate the percent of reported offenses cleared by arrest or exceptional means.

² Clearance Rates are computed on a per 100,000 population basis.

See Glossary for a further explanation.

TABLE 3.0.1

**CRIME INDEX ARRESTS¹
STATE OF MISSOURI
1992 - 2001**

OFFENSE	1992	1993	1994	1995	1996	1997	1998	1999	2000	2001
TOTAL INDEX	52,042	46,525	53,608	52,340	49,633	49,770	46,613	43,287	40,359	60,247
VIOLENT INDEX	11,861	10,495	14,333	12,428	10,110	10,561	10,036	8,779	8,578	15,665
PROPERTY INDEX	40,181	36,030	39,275	39,912	39,523	39,209	36,577	34,508	31,781	44,582
MURDER	471	549	603	526	345	316	310	257	261	453
FORCIBLE RAPE	725	764	711	671	628	546	538	475	417	618
ROBBERY	2,854	2,608	2,917	2,642	2,552	2,332	2,114	1,814	1,893	2,551
AGGRAVATED ASSAULT	7,811	6,574	10,102	8,589	6,585	7,367	7,074	6,233	6,007	12,043
BURGLARY	6,919	5,458	5,812	5,653	5,138	4,892	4,925	4,817	4,174	6,580
THEFT	29,383	26,539	29,296	30,384	30,672	30,564	27,850	25,682	23,661	33,474
MOTOR VEHICLE THEFT	3,435	3,628	3,682	3,434	3,349	3,368	3,475	3,682	3,615	3,932
ARSON	444	405	485	441	364	385	327	327	331	596
NUMBER OF REPORTING AGENCIES ¹	233	220	218	226	198	199	200	207	198	530

¹ Prior to 2001, Missouri law enforcement agencies voluntarily reported crime index arrest data. To account for non-reporting agencies, Crime Index arrests for these years were based on mathematical estimates. In 2001, RSMo43.505 mandated all Missouri law enforcement agencies to report crime index arrest data to the Missouri Uniform Crime Reporting Program managed by the Missouri State Highway Patrol. For this reason, 2001 Crime Index arrests were based on data reported by nearly 100% of Missouri law enforcement agencies. Users should keep in mind the transition from a voluntary to a mandatory crime reporting system may affect comparisons of 2001 Crime Index Arrests to prior years.

See Glossary for explanation of the computations used to obtain these rates.

TABLE 3.0.2

**CRIME INDEX ARREST RATES¹
STATE OF MISSOURI
1992 - 2001**

OFFENSE	1992	1993	1994	1995	1996	1997	1998	1999	2000	2001
TOTAL INDEX	1,293.4	1,252.9	1,416.4	1,347.4	1,443.9	1,429.0	1,338.7	1,181.2	1,103.7	1,062.7
VIOLENT INDEX	294.8	282.6	378.7	319.9	294.1	303.2	288.2	239.6	234.6	276.3
PROPERTY INDEX	998.6	970.3	1,037.7	1,027.5	1,149.8	1,125.7	1,050.5	941.6	869.1	786.4
MURDER	11.7	14.8	15.9	13.5	10.0	9.1	8.9	7.0	7.1	8.0
FORCIBLE RAPE	18.0	20.6	18.8	17.3	18.3	15.7	15.5	13.0	11.4	10.9
ROBBERY	70.9	70.2	77.1	68.0	74.2	67.0	60.7	49.5	51.8	45.0
AGGRAVATED ASSAULT	194.1	177.0	266.9	221.1	191.6	211.5	203.2	170.1	164.3	212.4
BURGLARY	172.0	147.0	153.6	145.5	149.5	140.5	141.4	131.4	114.1	116.1
THEFT	730.3	714.7	774.1	782.2	892.3	877.5	799.9	700.8	647.1	590.5
MOTOR VEHICLE THEFT	85.4	97.7	97.3	88.4	97.4	96.7	99.8	100.5	98.9	69.4
ARSON	11.0	10.9	12.8	11.4	10.6	11.1	9.4	8.9	9.1	10.5

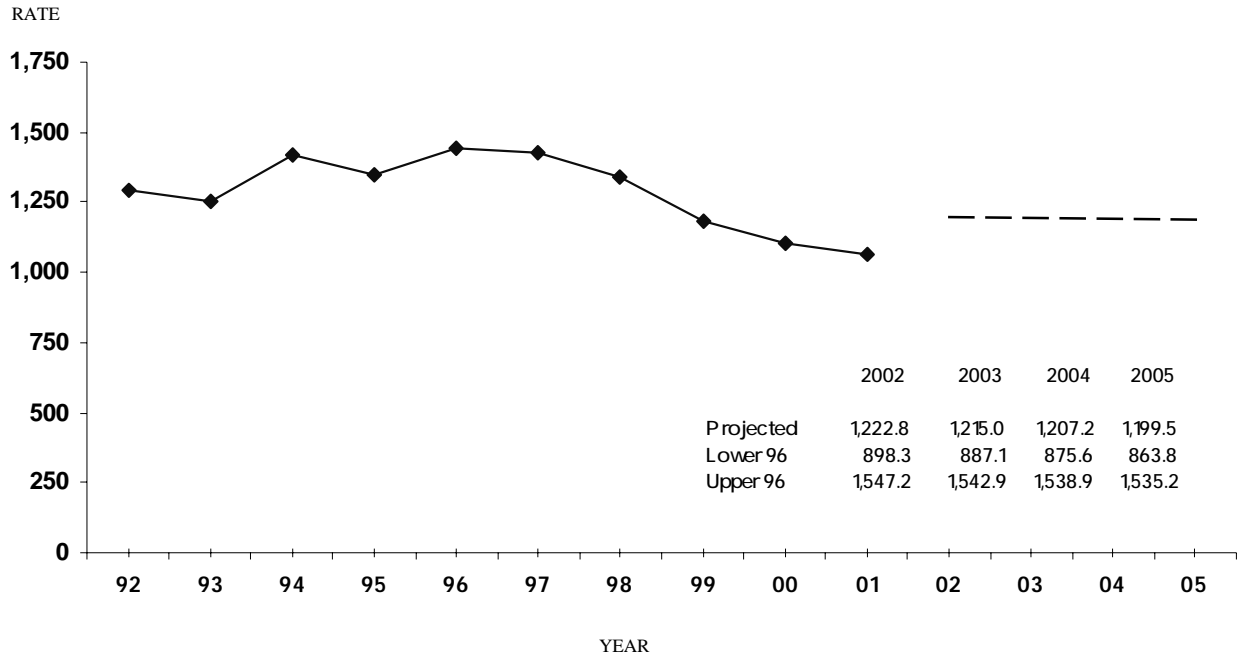
¹ Prior to 2001, Missouri law enforcement agencies voluntarily reported crime index offense data. To account for non-reporting agencies, Crime Index Offense Rates for these years were based on mathematical estimates. In 2001, RSMo43.505 mandated all Missouri law enforcement agencies to report crime index offense data to the Missouri Uniform Crime Reporting Program managed by the Missouri State Highway Patrol. For this reason, 2001 Crime Index Offense Rates were based on data reported by nearly 100% of Missouri law enforcement agencies. Users should keep in mind the transition from a voluntary to a mandatory crime reporting system may affect comparisons of 2001 Crime Index Offense rates to prior years.

² Crime Index Offense Rates are computed on a per 100,000 population basis.

See Glossary for explanation of the computations used to obtain these rates.

TABLE 3.0.3

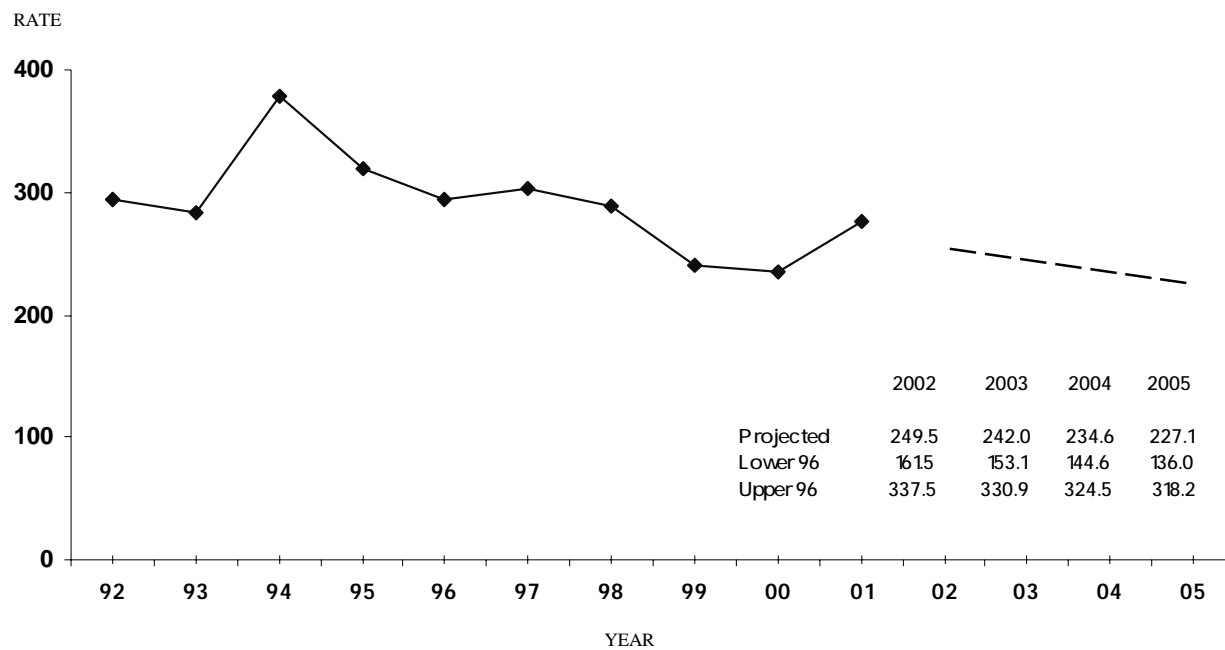
CRIME INDEX ARREST RATES, STATE OF MISSOURI¹
TIME SERIES



¹ Crime Index arrest rates relate to arrests made for crime index offenses reported by law enforcement agencies in the State of Missouri. They are computed on a per 100,000 population basis. See Glossary for explanation of the computations used to obtain these rates.

FIGURE 3.0.1

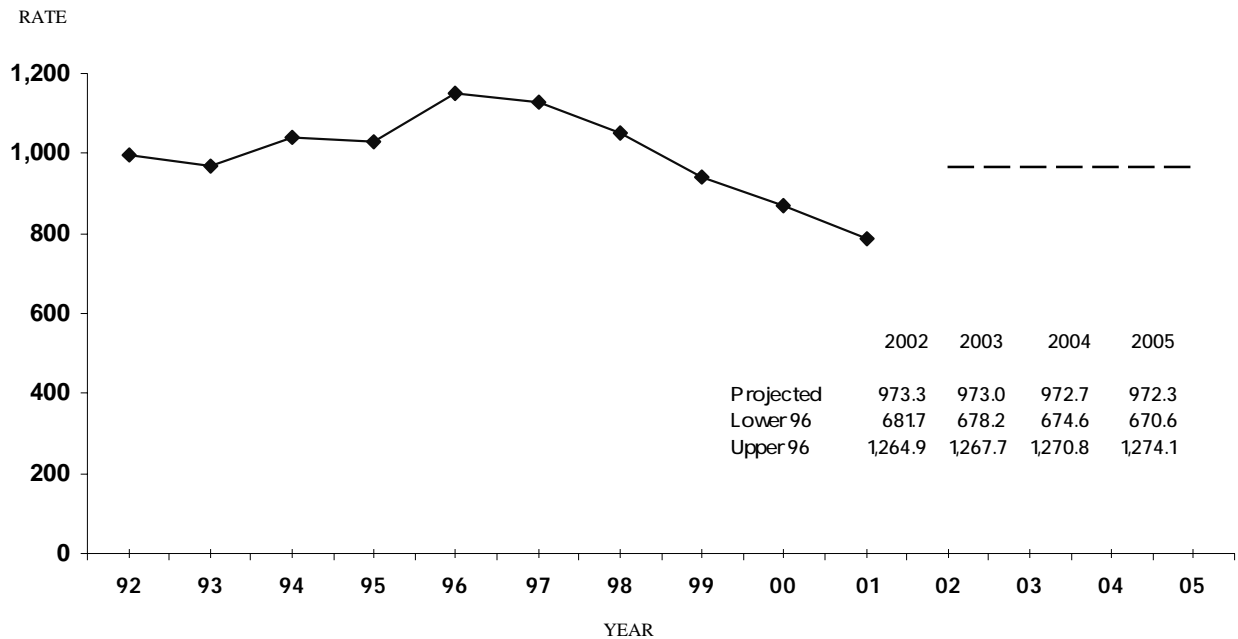
VIOLENT INDEX ARREST RATES, STATE OF MISSOURI¹
TIME SERIES



¹ Violent Index arrest rates relate to arrests made for violent index offenses reported by law enforcement agencies in the State of Missouri. They are computed on a per 100,000 population basis. See Glossary for explanation of the computations used to obtain these rates.

FIGURE 3.0.2

**PROPERTY INDEX ARREST RATES, STATE OF MISSOURI¹
TIME SERIES**



¹Property Index arrest rates relate to arrests made for property index offenses reported by law enforcement agencies in the State of Missouri. They are computed on a per 100,000 population basis. See Glossary for explanation of the computations used to obtain these rates.

FIGURE 3.0.3

4.0 MISSOURI DETAIL CRIME INDEX ANALYSIS

A SERIES OF TABLES AND FIGURES SUMMARIZES CRIME ACTIVITY, CLEARANCE RATES, CRIME PATTERNS, AND ARREST ACTIVITY ASSOCIATED WITH SPECIFIC TYPES OF CRIME INDEX OFFENSES COMMITTED IN THE STATE OF MISSOURI. DETAIL ANALYSIS IS PROVIDED ON THE FOLLOWING TYPES OF CRIME:

- MURDER
- FORCIBLE RAPE
- ROBBERY
- AGGRAVATED ASSAULT
- BURGLARY
- THEFT
- MOTOR VEHICLE THEFT
- ARSON

