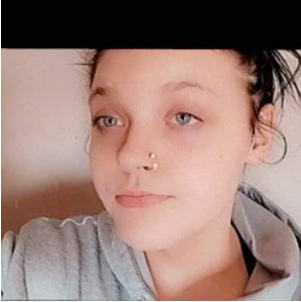




# Missing Juvenile

## Ashleigh Palmer

### Date of Last Contact: 2/16/2024



**Age at Disappearance:** 16

**Date of Birth:** 7/3/2007

**Race:** White

**Gender:** Female

**Hair:** Black

**Eyes:** Blue

**Height:** 5'10

**Weight:** 170

**Missing From:** Troy, MO

Ashleigh was last seen wearing a black sweatshirt and sweatpants.

If anyone has information regarding **Ashleigh Palmer's** whereabouts, please contact the **Lincoln County Sheriff's Office** at **636-528-8546**.



**Lincoln County Sheriff's Office**

**Phone: 636-528-8546**

**Missouri State Highway Patrol**

**Missing Persons Clearinghouse**

**Phone: 573-526-6178**

**Email: [missingpersons@mshp.dps.mo.gov](mailto:missingpersons@mshp.dps.mo.gov)**