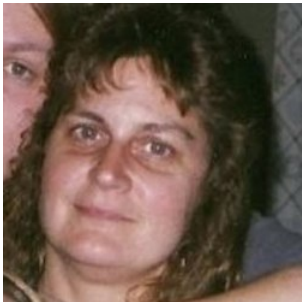




Missing Adult

Donna Lagermann

Date of Last Contact: 5/25/2001



Age at Disappearance: 41

Race: White

Gender: Female

Hair: Brown

Eyes: Blue

Height: 5'1

Weight: 140

**Missing From: Steelville,
MO**

If anyone has information regarding **Donna Lagermann's** whereabouts, please contact the **Crawford County Sheriff's Office** at **573-775-2125**.



Crawford County Sheriff's Office

Phone: 573-775-2125

Missouri State Highway Patrol

Missing Persons Clearinghouse

Phone: 573-526-6178

Email: missingpersons@mshp.dps.mo.gov