



Missouri Missing
Persons Clearinghouse

Unidentified Remains Clay County, MO

Date Found: April 18, 1985

NCIC: U800017814

Approx.

Age at Death:
17-23 years old

Sex: Female

Race: Black

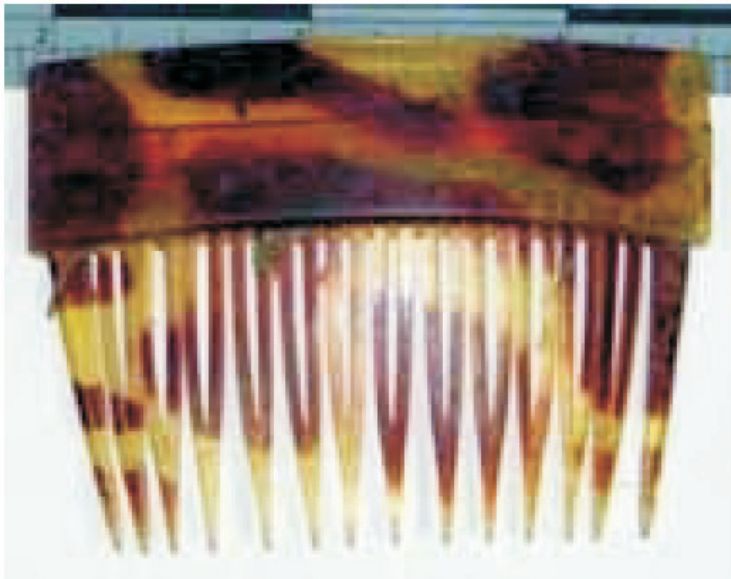
Height: 5'5" - 5'7"

Date Found:
04/18/1985

Remains Found:
Clay County, MO

The partial skeletal remains of a female was found in a field near Highway 210, approximately 11 miles east of Missouri City, MO next to some farmland near Cooley Lake. The cause of death is undetermined.

Dental records, which are available, show that she had several unattended cavities, visible decay on both right upper incisors, and enamel hypoplasias which was possibly a result from a high fever.



Clay County, MO Sheriff's Office
Cold Case Unit

Det. Jesse Stoker

816-407-3716

Missouri State Highway Patrol
Missing Persons Clearinghouse

573-526-6178

E-mail: missingpersons@mshp.dps.mo.gov